

INDEX

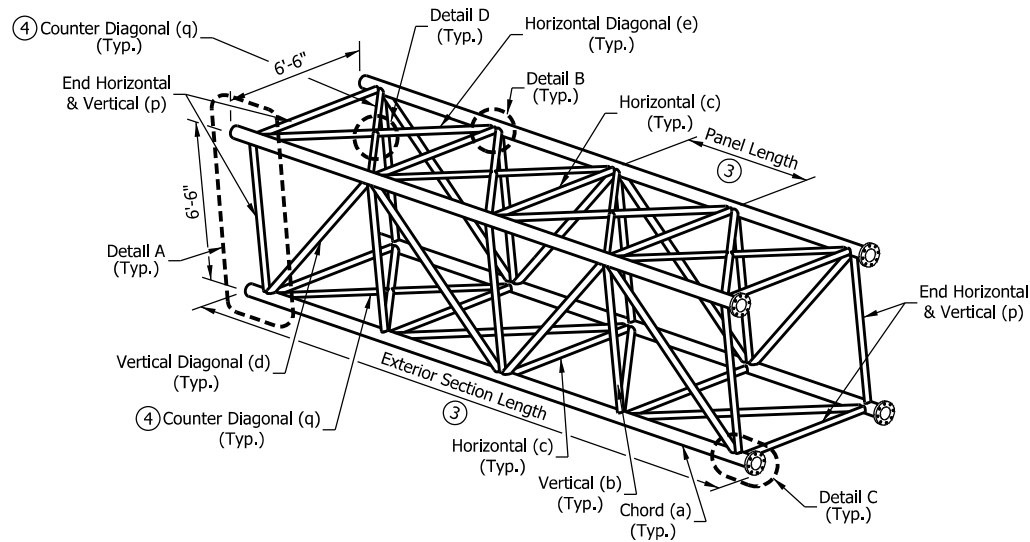
SHEET NO.	SUBJECT
1	Index
2	Plan & Elevation
3	Truss Sections, Member Size Table
4	Table of Dimensions, Spans 34' thru 81'
5	Table of Dimensions, Spans 82' thru 130' & Camber
6	Chord Connections and Weld Details
7	Flange & Chord End Plate Details
8	End Support Upper Chord Connection Details
9	End Support Lower Chord Connection Details
10	End Support Base Plate and I.D. Tag Details
11	End Support Handhole, Top Cap, and J-Hook Details
12	Anchor Plates, Anchor Bolts, and Metal Skirt Details
13	Ladder Details
14	Ladder Details
15	Security Gate Details
16	Walkway Grating Details
17	Walkway Grating Details
18	Walkway Grating Details
19	Wiring Layout Details
20	Spread Foundation at 33" Concrete Barrier Wall
21	Spread Foundation at 45" Concrete Barrier Wall
22	Spread Foundation at Median or Shoulder, 36" Height
23	Spread Foundations Quantities

INDIANA DEPARTMENT OF TRANSPORTATION

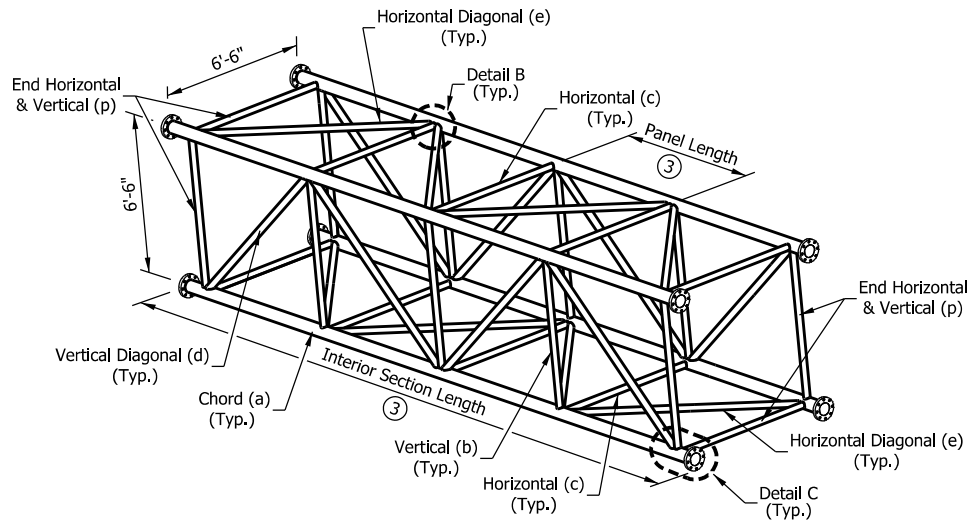
DYNAMIC MESSAGE SIGN STRUCTURE
DRAWING INDEX



END SUPPORT
Column (h)



TYPICAL EXTERIOR TRUSS SECTION



TYPICAL INTERIOR TRUSS SECTION

NOTES:

1. See Sheet 6 for Details A through D.
2. Truss members to be aluminum. End support members to be steel. Steel pipe diameters shown in table are nominal pipe sizes.
3. Number of panels and sections varies. See Sheets 4 and 5 for recommended dimensions.
4. Counter Diagonal (q) shall be provided in exterior sections at the top of each panel and at the bottom of end panel only as shown. It is not required in interior sections.
5. See Sheet 2 for end support members.

MAX. SPAN = 130 ft. MAX. SIGN AREA = 300 sq. ft. MAX. MOUNTING HEIGHT = 24'-6"		
ALUMINUM TRUSS MEMBERS		
MEMBER	MARK	O.D. (IN.) x WALL THK. (IN.)
CHORD	a	7 x 0.375
VERTICAL	b	3 x 0.250
HORIZONTAL	c	4 x 0.250
VERTICAL DIAGONAL	d	3.5 x 0.500
HORIZONTAL DIAGONAL	e	4 x 0.500
END VERTICAL and HORIZONTAL	p	4 x 0.375
COUNTER DIAGONAL (SEE NOTE 4)	q	2.5 x 0.500
STEEL END-SUPPORT MEMBERS		
COLUMN	h	14 x 0.375
HORIZONTAL	f	3.5 x 0.216
DIAGONAL	g	4.5 x 0.438
W-BEAM	j	W10 x 68

INDIANA DEPARTMENT OF TRANSPORTATION
DYNAMIC MESSAGE SIGN STRUCTURE
TRUSS SECTIONS, MEMBER SIZE TABLE

DIMENSIONS FOR DYNAMIC MESSAGE SIGN STRUCTURES (34' THRU 81')

SPAN	EXTERIOR SECTIONS					INTERIOR SECTIONS			
SPAN-TRUSS LENGTH, (FT)	NO. OF EXT. SECTIONS	NO. OF PANELS PER SECTION	VARIABLE END DIMEN.	PANEL LENGTH	SECTION LENGTH	NO. OF INT. SECTIONS	NO. OF PANELS PER SECTION	PANEL LENGTH	SECTION LENGTH
34	1	6	6"	5'-6"	35'-6"	0			
35	1	6	6"	5'-8"	36'-6"	0			
36	2	3	6"	5'-6"	18'-9"	0			
37	2	3	6"	5'-8"	19'-3"	0			
38	2	3	6"	5'-10"	19'-9"	0			
39	2	3	6"	6'-0"	20'-3"	0			
40	2	3	6"	6'-2"	20'-9"	0			
41	2	3	6"	6'-4"	21'-3"	0			
42	2	3	6"	6'-6"	21'-9"	0			
43	2	4	6"	5'-0"	22'-3"	0			
44	2	4	6"	5'-1 1/2"	22'-9"	0			
45	2	4	6"	5'-3"	23'-3"	0			
46	2	4	6"	5'-4 1/2"	23'-9"	0			
47	2	4	6"	5'-6"	24'-3"	0			
48	2	4	6"	5'-7 1/2"	24'-9"	0			
49	2	4	6"	5'-9"	25'-3"	0			
50	2	4	6"	5'-10 1/2"	25'-9"	0			
51	2	4	6"	6'-0"	26'-3"	0			
52	2	4	6"	6'-1 1/2"	26'-9"	0			
53	2	4	6"	6'-3"	27'-3"	0			
54	2	4	6"	6'-4 1/2"	27'-9"	0			
55	2	4	6"	6'-6"	28'-3"	0			
56	2	5	5 1/4"	5'-3 3/4"	28'-9"	0			
57	2	5	6 1/4"	5'-4 3/4"	29'-3"	0			
58	2	5	6"	5'-6"	29'-9"	0			
59	2	5	5 3/4"	5'-7 1/4"	30'-3"	0			
60	2	5	5 1/2"	5'-8 1/2"	30'-9"	0			
61	2	5	6 1/2"	5'-9 1/2"	31'-3"	0			
62	2	5	6 1/4"	5'-10 3/4"	31'-9"	0			
63	2	5	6"	6'-0"	32'-3"	0			
64	2	5	5 3/4"	6'-1 1/4"	32'-9"	0			
65	2	5	5 1/2"	6'-2 1/2"	33'-3"	0			
66	2	5	5 1/4"	6'-3 3/4"	33'-9"	0			
67	2	5	5"	6'-5"	34'-3"	0			
68	2	5	6"	6'-6"	34'-9"	0			
69	2	4	6"	5'-4"	23'-7"	1	4	5'-4"	23'-4"
70	2	4	6"	5'-5"	23'-11"	1	4	5'-5"	23'-8"
71	2	4	6"	5'-6"	24'-3"	1	4	5'-6"	24'-0"
72	2	4	6"	5'-7"	24'-7"	1	4	5'-7"	24'-4"
73	2	4	6"	5'-8"	24'-11"	1	4	5'-8"	24'-8"
74	2	4	6"	5'-9"	25'-3"	1	4	5'-9"	25'-0"
75	2	4	6"	5'-10"	25'-7"	1	4	5'-10"	25'-4"
76	2	4	6"	5'-11"	25'-11"	1	4	5'-11"	25'-8"
77	2	4	6"	6'-0"	26'-3"	1	4	6'-0"	26'-0"
78	2	4	6"	6'-1"	26'-7"	1	4	6'-1"	26'-4"
79	2	4	6"	6'-2"	26'-11"	1	4	6'-2"	26'-8"
80	2	4	6"	6'-3"	27'-3"	1	4	6'-3"	27'-0"
81	2	4	6"	6'-4"	27'-7"	1	4	6'-4"	27'-4"

NOTES:

1. The table of dimensions for a dynamic message sign structure is divided and put on two Sheets 4 and 5. the table shows dimensions with all sections requirements accounted for.
2. All panels on a truss shall be the same length. The minimum panel length for all trusses is 5'-0" and the maximum is 6'-6".
3. A single interior section in a truss shall have an even number of panels to maintain the pattern of the vertical diagonals.
4. Use minimum number of sections for each truss, keeping the maximum section length at 35'-6".
5. See Sheet 5 for required camber.

INDIANA DEPARTMENT OF TRANSPORTATION

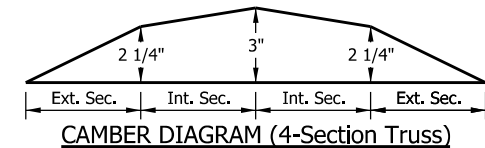
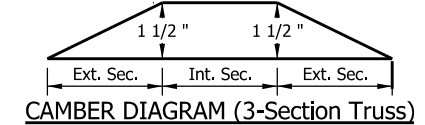
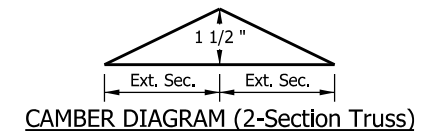
DYNAMIC MESSAGE SIGN STRUCTURE
TABLE OF DIMENSIONS
SPANS 34' THRU 81'

DIMENSIONS FOR DYNAMIC MESSAGE SIGN STRUCTURES (82' THRU 130')

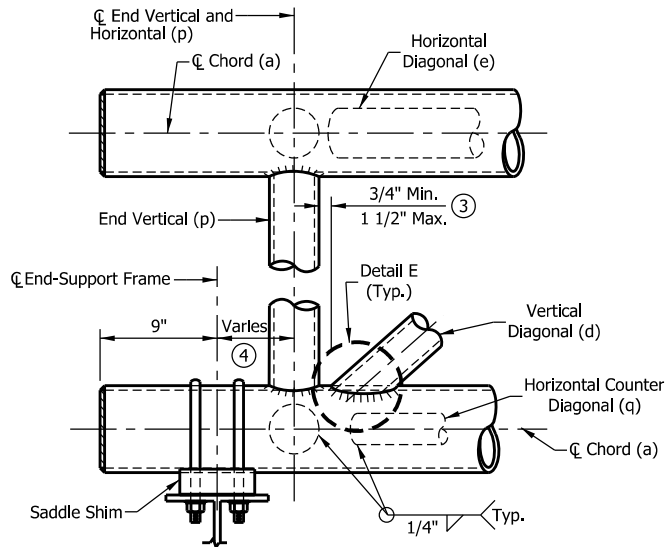
SPAN	EXTERIOR SECTIONS					INTERIOR SECTIONS				
SPAN-TRUSS LENGTH, (FT)	NO. OF EXT. SECTIONS	NO. OF PANELS PER SECTION	VARIABLE END DIMEN.	PANEL LENGTH	SECTION LENGTH	NO. OF INT. SECTIONS	NO. OF PANELS PER SECTION	PANEL LENGTH	SECTION LENGTH	
82	2	4	6"	6'-5"	27'-11"	1	4	6'-5"	27'-8"	
83	2	4	6"	6'-6"	28'-3"	1	4	6'-6"	28'-0"	
84	2	5	5 3/4"	5'-7 3/4"	30'-5 1/2"	1	4	5'-7 3/4"	24'-7"	
85	2	5	6 1/2"	5'-8 1/2"	30'-10"	1	4	5'-8 1/2"	24'-10"	
86	2	5	5 1/2"	5'-9 1/2"	31'-2"	1	4	5'-9 1/2"	25'-2"	
87	2	5	6 1/4"	5'-10 1/4"	31'-6 1/2"	1	4	5'-10 1/4"	25'-5"	
88	2	5	7"	5'-11"	31'-11"	1	4	5'-11"	25'-8"	
89	2	5	6"	6'-0"	32'-3"	1	4	6'-0"	26'-0"	
90	2	5	5"	6'-1"	32'-7"	1	4	6'-1"	26'-4"	
91	2	5	5 3/4"	6'-1 3/4"	32'-11 1/2"	1	4	6'-1 3/4"	26'-7"	
92	2	5	6 1/2"	6'-2 1/2"	33'-4"	1	4	6'-2 1/2"	26'-10"	
93	2	5	5 1/2"	6'-3 1/2"	33'-8"	1	4	6'-3 1/2"	27'-2"	
94	2	5	6 1/4"	6'-4 1/4"	34'-0 1/2"	1	4	6'-4 1/4"	27'-5"	
95	2	5	5 1/4"	6'-5 1/4"	34'-4 1/2"	1	4	6'-5 1/4"	27'-9"	
96	2	5	6"	6'-6"	34'-9"	1	4	6'-6"	28'-0"	
97	2	4	6"	5'-7 1/2"	24'-9"	2	4	5'-7 1/2"	24'-6"	
98	2	4	6"	5'-8 1/4"	25'-0"	2	4	5'-8 1/4"	24'-9"	
99	2	4	6"	5'-9"	25'-3"	2	4	5'-9"	25'-0"	
100	2	4	6"	5'-9 3/4"	25'-6"	2	4	5'-9 3/4"	25'-3"	
101	2	4	6"	5'-10 1/2"	25'-9"	2	4	5'-10 1/2"	25'-6"	
102	2	4	6"	5'-11 1/4"	26'-0"	2	4	5'-11 1/4"	25'-9"	
103	2	4	6"	6'-0"	26'-3"	2	4	6'-0"	26'-0"	
104	2	4	6"	6'-0 3/4"	26'-6"	2	4	6'-0 3/4"	26'-3"	
105	2	4	6"	6'-1 1/2"	26'-9"	2	4	6'-1 1/2"	26'-6"	
106	2	4	6"	6'-2 1/4"	27'-0"	2	4	6'-2 1/4"	26'-9"	
107	2	4	6"	6'-3"	27'-3"	2	4	6'-3"	27'-0"	
108	2	4	6"	6'-3 3/4"	27'-6"	2	4	6'-3 3/4"	27'-3"	
109	2	4	6"	6'-4 1/2"	27'-9"	2	4	6'-4 1/2"	27'-6"	
110	2	4	6"	6'-5 1/4"	28'-0"	2	4	6'-5 1/4"	27'-9"	
111	2	4	6"	6'-6"	28'-3"	2	4	6'-6"	28'-0"	
112	2	5	6"	5'-3"	28'-6"	2	5	5'-3"	28'-3"	
113	2	5	7"	5'-3 1/2"	28'-9 1/2"	2	5	5'-3 1/2"	28'-5 1/2"	
114	2	5	5 1/2"	5'-4 1/4"	28'-11 3/4"	2	5	5'-4 1/4"	28'-9 1/4"	
115	2	5	6 1/2"	5'-4 3/4"	29'-3 1/4"	2	5	5'-4 3/4"	28'-11 3/4"	
116	2	5	5"	5'-5 1/2"	29'-5 1/2"	2	5	5'-5 1/2"	29'-3 1/2"	
117	2	5	6"	5'-6"	29'-9"	2	5	5'-6"	29'-6"	
118	2	5	5"	5'-6 1/2"	29'-10 1/2"	2	5	5'-6 1/2"	29'-8 1/2"	
119	2	5	5 1/2"	5'-7 1/4"	30'-2 3/4"	2	5	5'-7 1/4"	30'-0 1/4"	
120	2	5	6 1/2"	5'-7 3/4"	30'-6 1/4"	2	5	5'-7 3/4"	30'-2 3/4"	
121	2	5	5"	5'-8 1/2"	30'-8 1/2"	2	5	5'-8 1/2"	30'-6 1/2"	
122	2	5	6"	5'-9"	31'-0"	2	5	5'-9"	30'-9"	
123	2	5	7"	5'-9 1/2"	31'-3 1/2"	2	5	5'-9 1/2"	30'-11 1/2"	
124	2	5	5 1/2"	5'-10 1/4"	31'-5 3/4"	2	5	5'-10 1/4"	31'-3 1/4"	
125	2	5	6 1/2"	5'-10 3/4"	31'-9 1/4"	2	5	5'-10 3/4"	31'-5 3/4"	
126	2	5	5"	5'-11 1/2"	31'-11 1/2"	2	5	5'-11 1/2"	31'-9 1/2"	
127	2	5	6"	6'-0"	32'-3"	2	5	6'-0"	32'-0"	
128	2	5	7"	6'-0 1/2"	32'-6 1/2"	2	5	6'-0 1/2"	32'-2 1/2"	
129	2	5	5 1/2"	6'-1 1/4"	32'-8 3/4"	2	5	6'-1 1/4"	32'-6 1/4"	
130	2	5	6 1/2"	6'-1 3/4"	33'-0 1/4"	2	5	6'-1 3/4"	32'-8 3/4"	

NOTES:

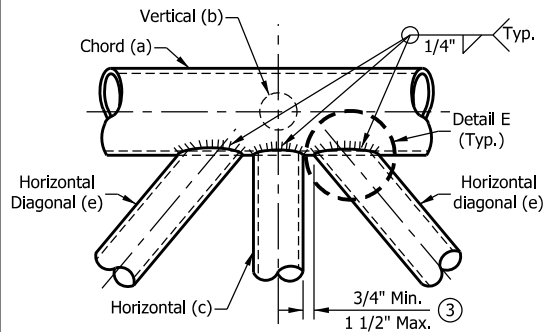
1. Camber diagrams to build truss structures with 2 to 4 sections are shown. Cambers shown are for fabrication only and are measured with trusses fully supported at no-load conditions. Allowable camber tolerance for truss is 25% of specific camber value.
2. See Sheet 4 for additional notes.



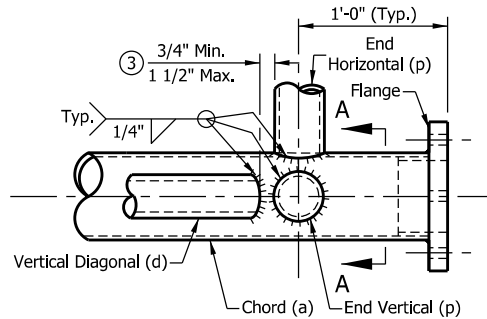
INDIANA DEPARTMENT OF TRANSPORTATION
DYNAMIC MESSAGE SIGN STRUCTURE
TABLE OF DIMENSIONS
SPANS 82' THRU 130' & CAMBER



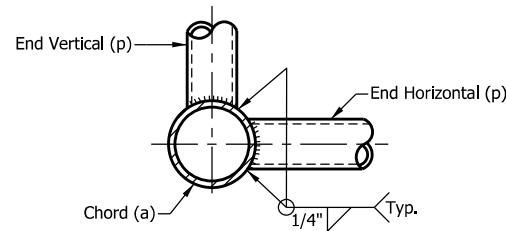
DETAIL A
EXTERIOR SECTION AT END-SUPPORT



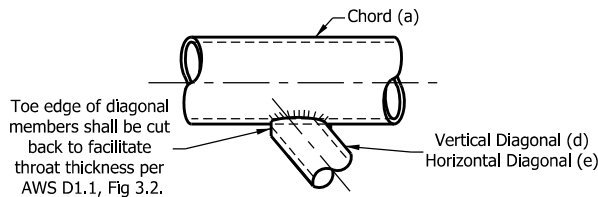
DETAIL B
TYPICAL PANEL CONNECTION
PLAN VIEW



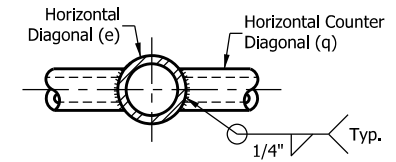
DETAIL C
CHORD AT FLANGE CONNECTION
PLAN VIEW



SECTION A-A
TYPICAL JOINT DETAILS



DETAIL E

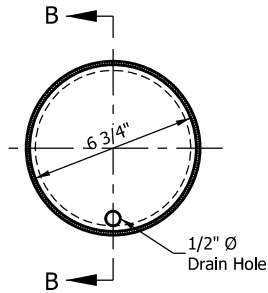


DETAIL D

NOTES:

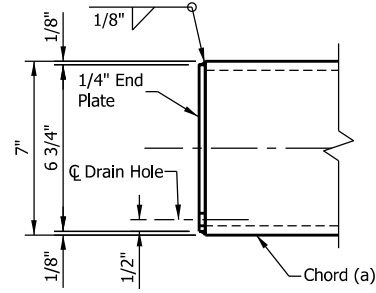
1. All bracing members shall be machined to provide a snug fit to the chord along the entire edge of bracing members before welding.
2. See Sheet 3 for member locations and sizes.
3. Vertical and horizontal diagonals shall be detailed for minimum offset from the panel point based on the following: offset shall be such as to provide a 3/4" minimum to 1 1/2" maximum clearance between any diagonal and any horizontal or vertical member; and provide clearance for U-bolt connection for signs.
4. For variable end dimension, Sheets 4 and 5.

INDIANA DEPARTMENT OF TRANSPORTATION
DYNAMIC MESSAGE SIGN STRUCTURE
CHORD CONNECTIONS AND WELD DETAILS



END VIEW

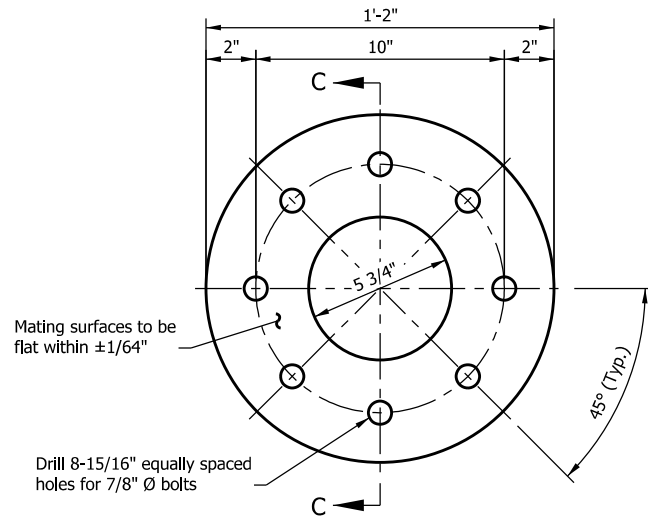
CHORD END PLATE DETAILS



SECTION B-B

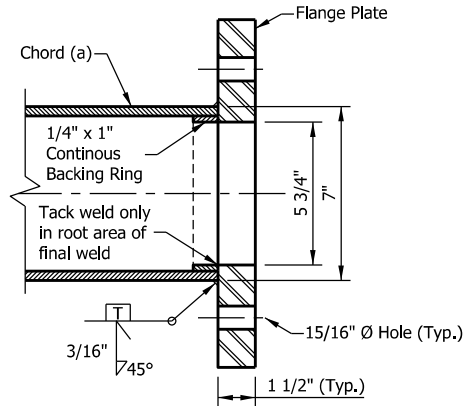
NOTE:

1. See Sheet 2 for chord flange locations.



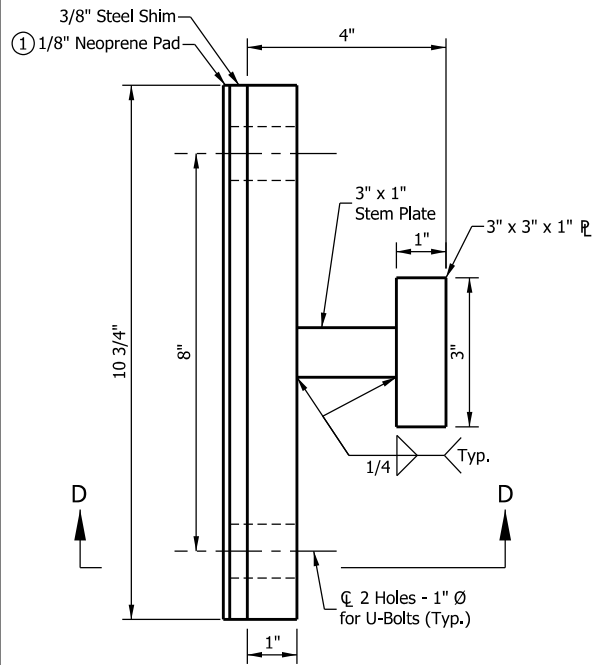
END VIEW

FLANGE PLATE DETAILS

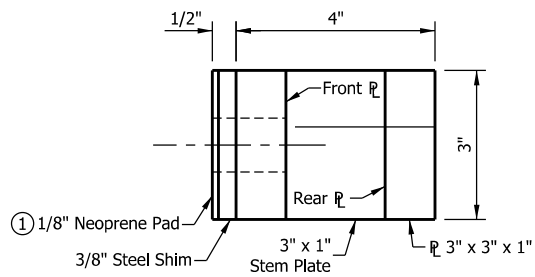


SECTION C-C

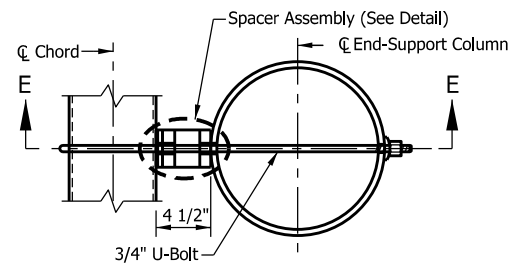
INDIANA DEPARTMENT OF TRANSPORTATION
DYNAMIC MESSAGE SIGN STRUCTURE
FLANGE & CHORD END PLATE DETAILS



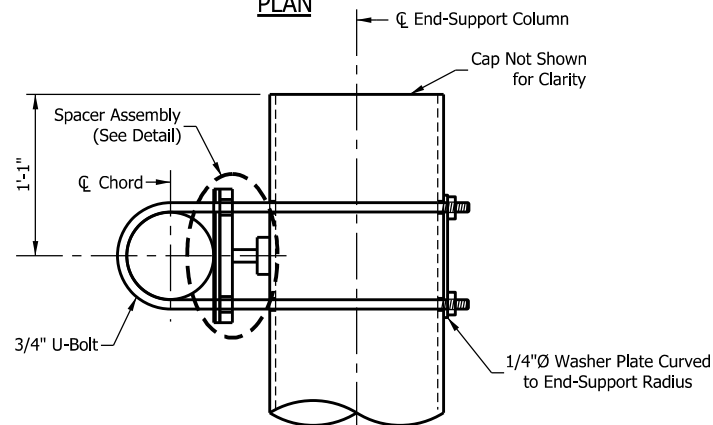
ELEVATION
END-SUPPORT SPACER ASSEMBLY DETAIL



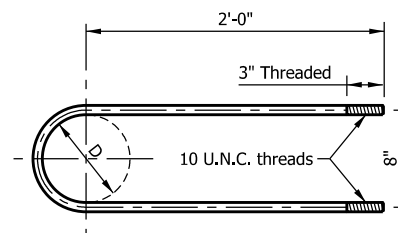
SECTION D-D



PLAN



SECTION E-E
UPPER CHORD CONNECTION DETAILS

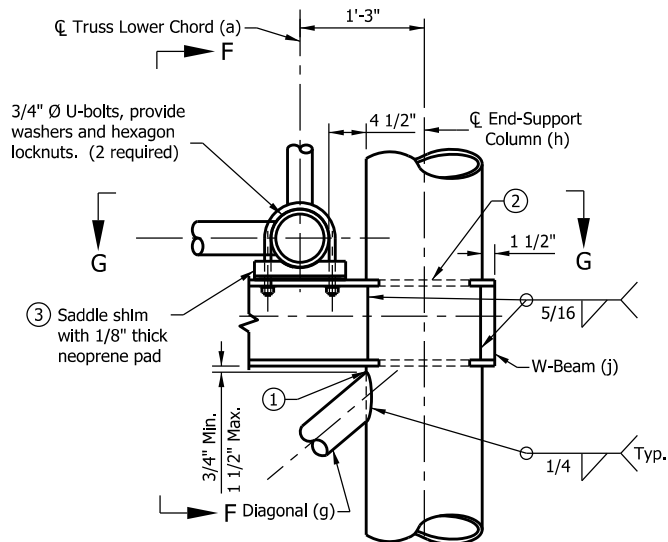


3/4\"/>

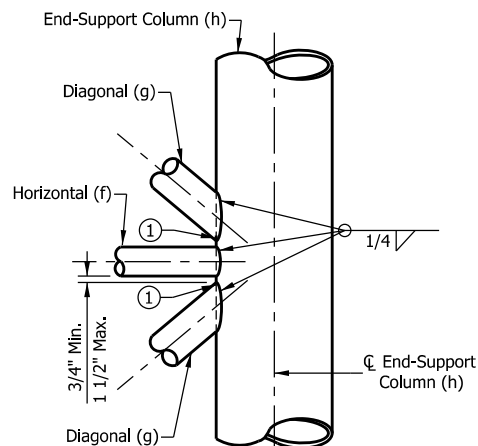
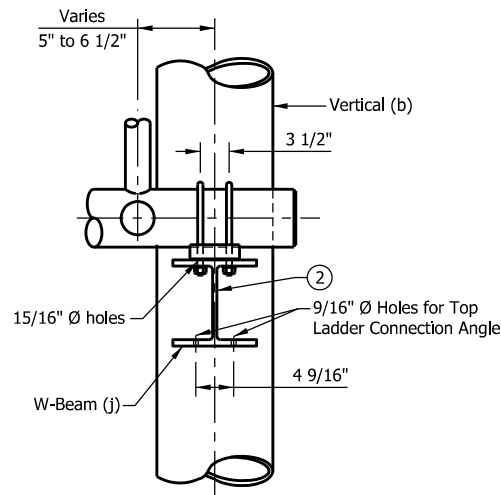
NOTES:

- ① Provide isolation from steel-dissimilar metal as required.
2. All spacer assembly material to be steel.

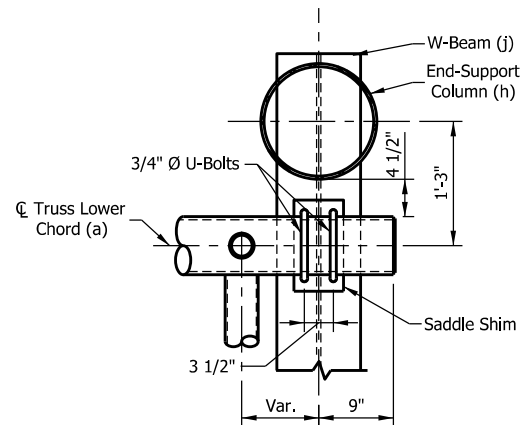
INDIANA DEPARTMENT OF TRANSPORTATION
DYNAMIC MESSAGE SIGN STRUCTURE
END SUPPORT
UPPER CHORD CONNECTION DETAILS



LOWER CHORD CONNECTION DETAIL

ELEVATION (END SUPPORT)
TYPICAL BRACING MEMBERS CONNECTION

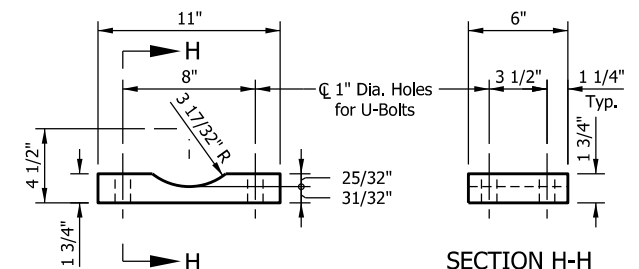
SECTION F-F



SECTION G-G

NOTES:

- ① Toe edge of diagonal member shall be cut back to facilitate throat thickness. See Sheet 6 for toe-edge Detail E.
- ② Cut holes in end support columns for W-beams to pass through. Holes to have 1/8" maximum clearance to W-beam. Holes in opposite sides of column to be checked for proper alignment prior to cutting.
- ③ Provide neoprene pads at all chord-to-W-beam bearing surfaces.
4. See Sheet 3 for end-support member sizes.



SECTION H-H

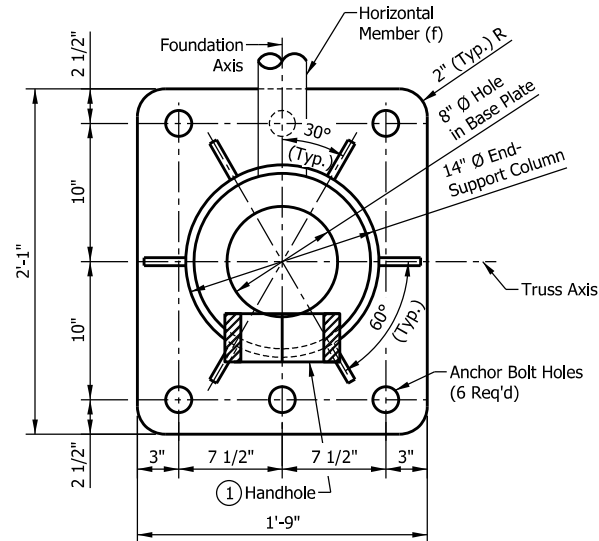
SADDLE SHIM DETAIL

INDIANA DEPARTMENT OF TRANSPORTATION

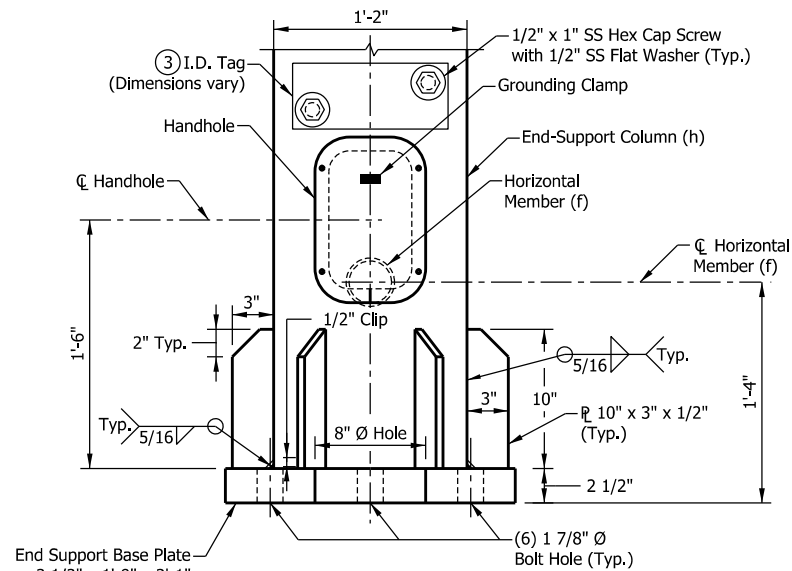
DYNAMIC MESSAGE SIGN STRUCTURE

END-SUPPORT

LOWER CHORD CONNECTION DETAILS



TYPE B-14 BASE PLATE



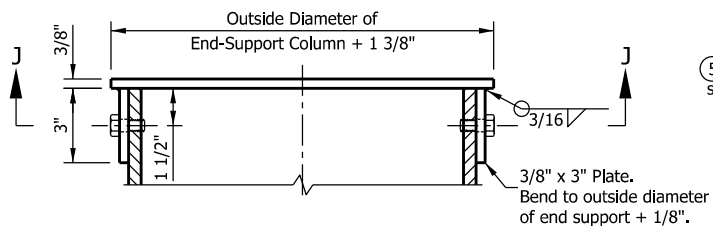
ELEVATION

NOTES:

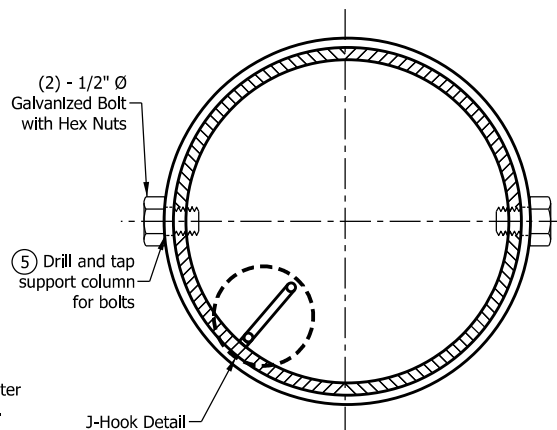
- ① See Sheet 11 for handhole details.
2. See Sheet 12 for anchor bolts and skirt details.
- ③ I.D. tag is a 1/8" stainless steel plate with the following information stamped in 1/2" black letters:
 Manufacturer _____, Drawing/Order # _____
 Contract # _____, Structure Type _____,
 Fabrication Date _____, Structure Length _____
 End Support Mounting Height _____
4. Each end support requires one I.D. tag.

INDIANA DEPARTMENT OF TRANSPORTATION

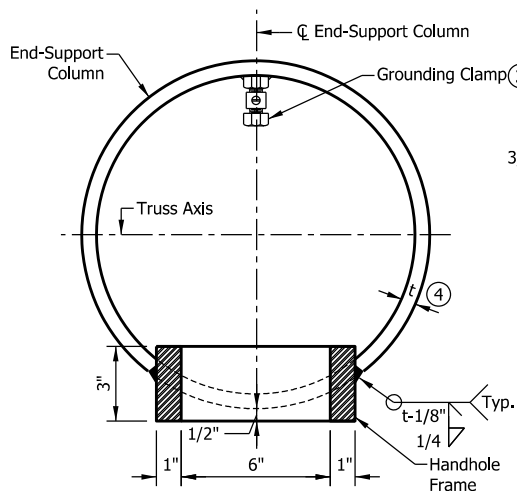
DYNAMIC MESSAGE SIGN STRUCTURE
 END SUPPORT
 BASE PLATE AND I.D. TAG DETAILS



**TOP CAP
ELEVATION VIEW**

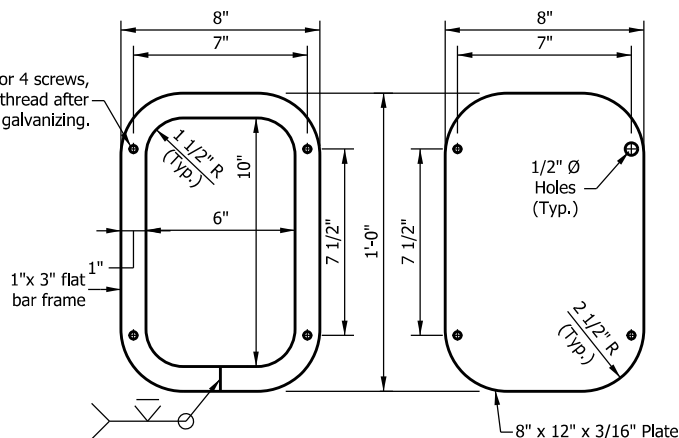


SECTION J-J



**HANDHOLE
SECTION ACROSS COLUMN**

Drill and tap for 4 screws,
3/8" - 20. Chase thread after
galvanizing.

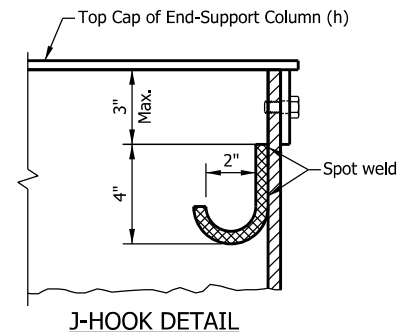


HANDHOLE FRAME DETAIL

HANDHOLE COVER

NOTES:

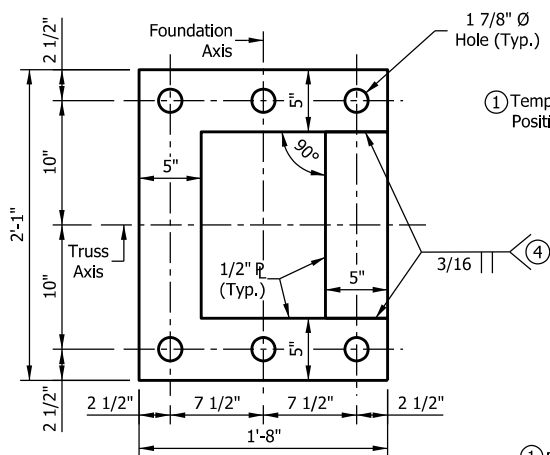
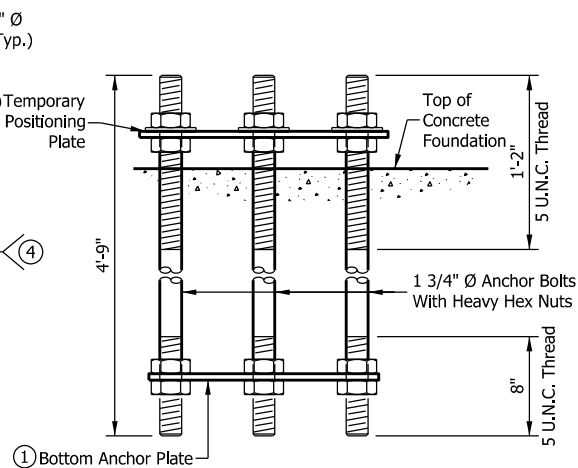
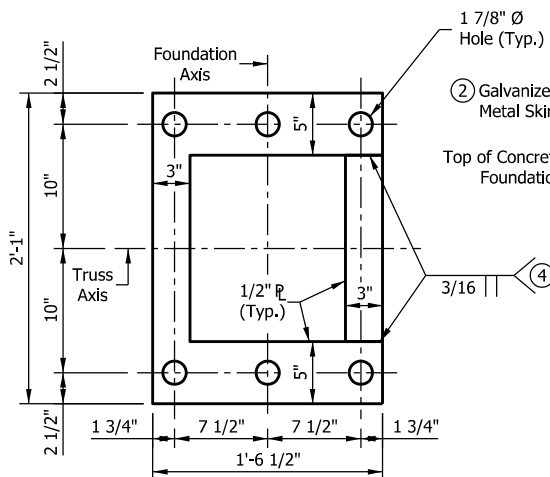
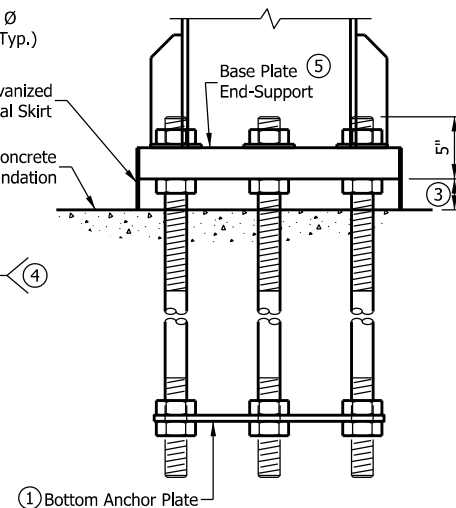
1. In lieu of fabricated handhole frame as shown, frame may be cut from 3" plate (rolling direction vertical).
2. See Standard Drawing E 802-SNWR-03 for grounding post details. Grounding post to be placed on far side of support directly opposite center of handhole.
3. See Sheet 10 for handhole locations.
4. See Sheet 3 for thicknesses of end-support column.
5. Bolts shall be located to miss J-hook.
6. One handhole required on each end support.



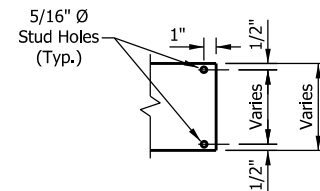
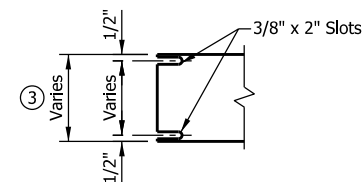
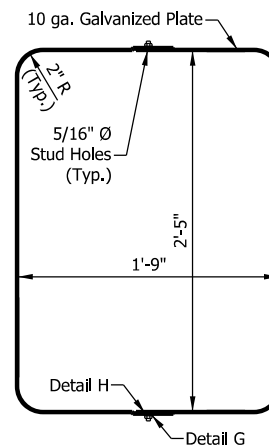
J-HOOK DETAIL

INDIANA DEPARTMENT OF TRANSPORTATION

**DYNAMIC MESSAGE SIGN STRUCTURE
END SUPPORT HANDHOLE, TOP CAP,
AND J-HOOK DETAILS**

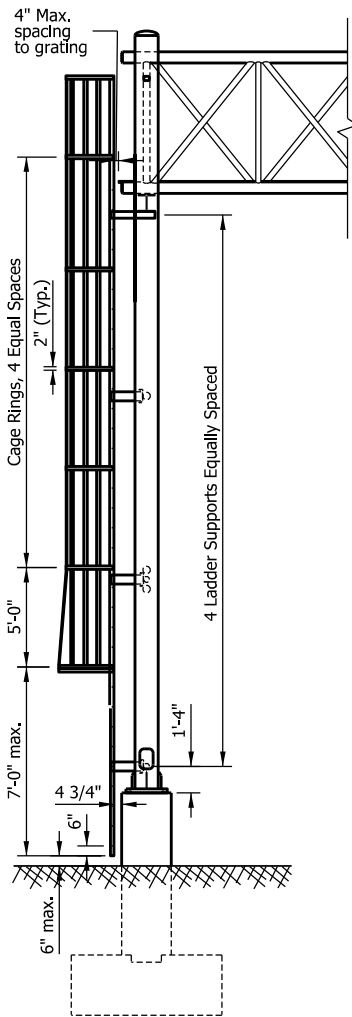
**TEMPORARY POSITIONING PLATE****ANCHOR BOLT DETAILS
BEFORE CONCRETE PLACEMENT****BOTTOM ANCHOR PLATE****ANCHOR BOLT DETAILS
AFTER CONCRETE PLACEMENT****NOTES:**

- ① Use temporary positioning plate and bottom anchor plate for all foundations. Temporary positioning plate should be removed after placing concrete.
- ② Secure galvanized metal skirt to base plate after erection as shown in skirt detail.
- ③ Minimum base plate gap is 2 1/2" and can be increased up to 5 1/2". Metal skirt width shall be at least 1 1/2" more than the actual gap.
- ④ Contractor has the option to use four separate bars. Weld to maintain angles and shapes as shown.
- ⑤ For base plate of end-support, see Sheet 10.

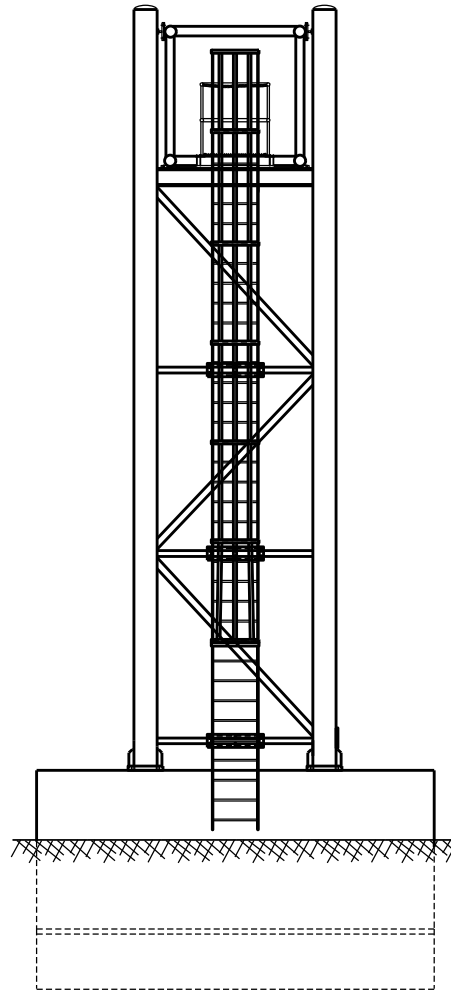
**DETAIL G****DETAIL H****METAL SKIRT DETAIL**

INDIANA DEPARTMENT OF TRANSPORTATION

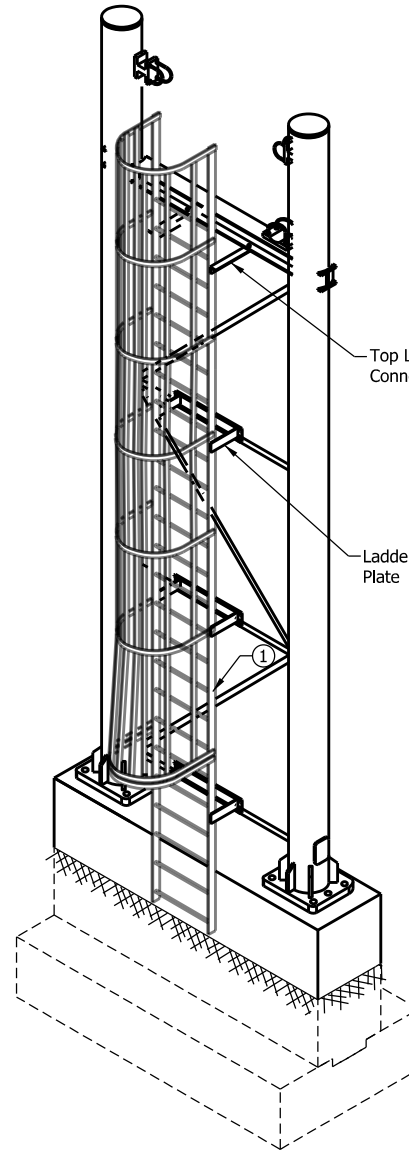
DYNAMIC MESSAGE SIGN STRUCTURE
ANCHOR PLATES, ANCHOR BOLTS,
AND METAL SKIRT DETAILS



SIDE VIEW

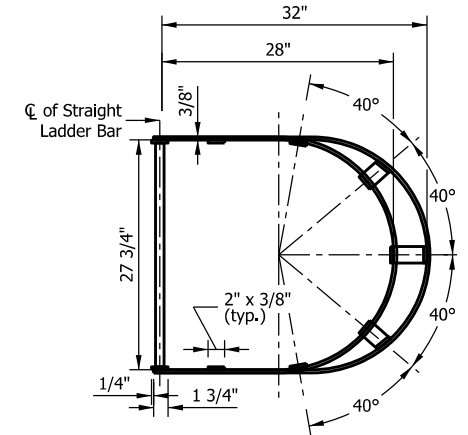


FRONT VIEW OF
LADDER AND CAGE



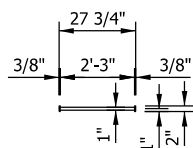
NOTES:

- ① See Sheet 15 for security gate details.
- ② See Sheet 14 for ladder details.

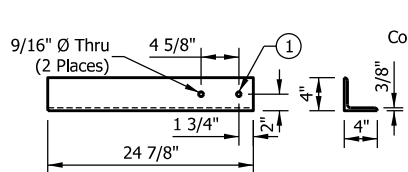


TOP VIEW OF
LADDER AND CAGE

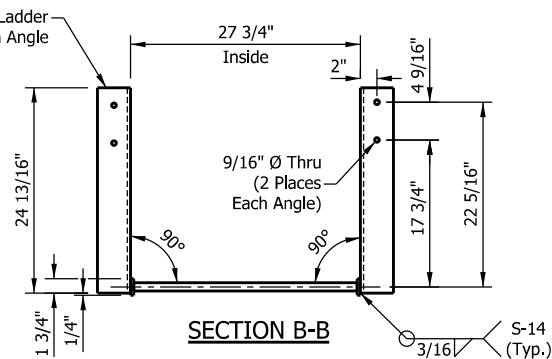
INDIANA DEPARTMENT OF TRANSPORTATION
DYNAMIC MESSAGE SIGN STRUCTURE
LADDER DETAILS



**TOP VIEW OF
LADDER**



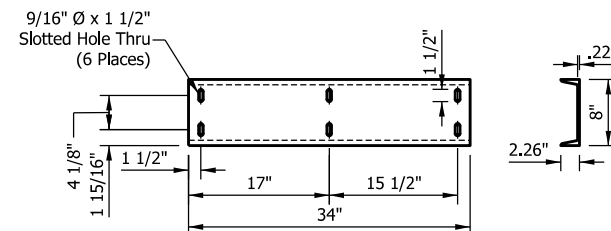
TOP LADDER CONNECTION ANGLE



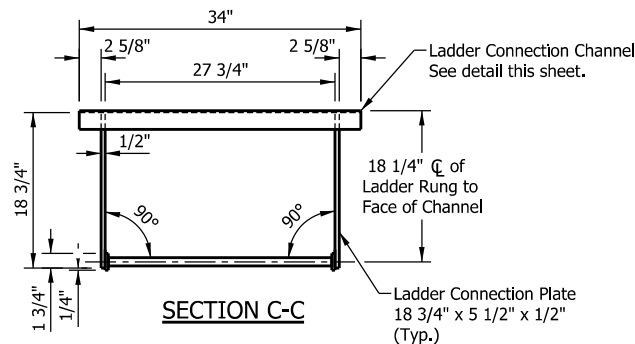
SECTION B-B

NOTE:

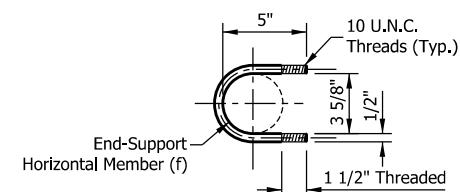
- ① (1) A-325 bolts 1/2" x 2" on each side of the W-beam with (1) flat washer and (1) lock nut.



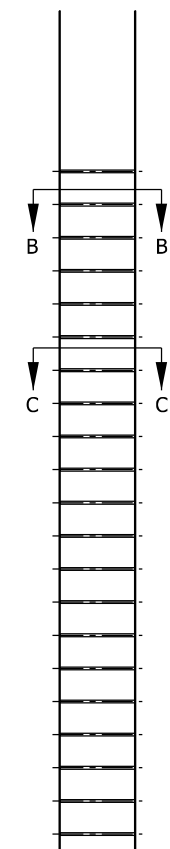
LADDER CONNECTION CHANNEL



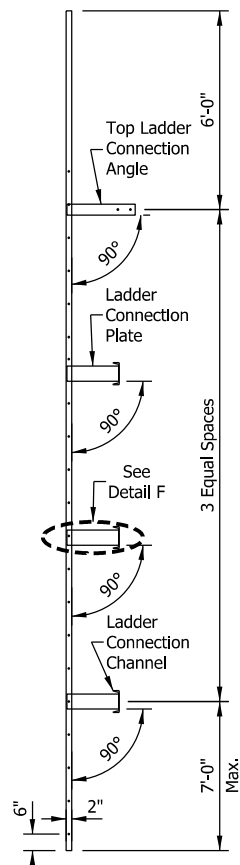
SECTION C-C



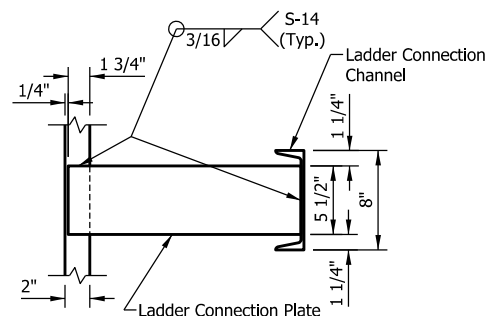
**1/2" DIA. STAINLESS STEEL U-BOLT DETAIL
(Used for ladder connection channel)**



**FRONT VIEW OF
LADDER**

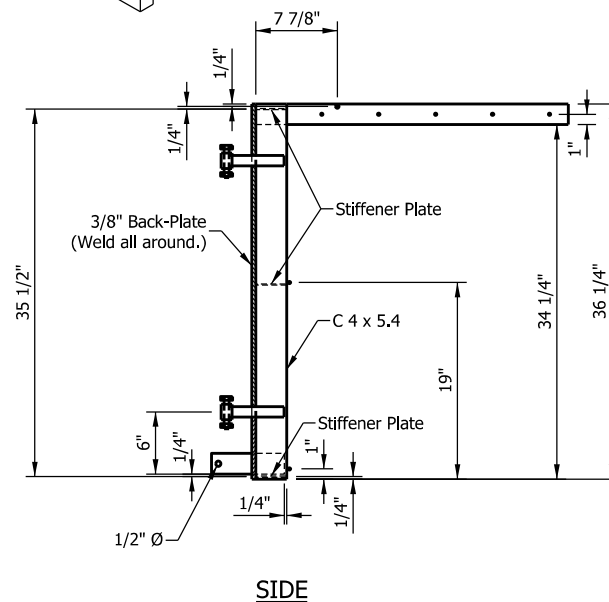
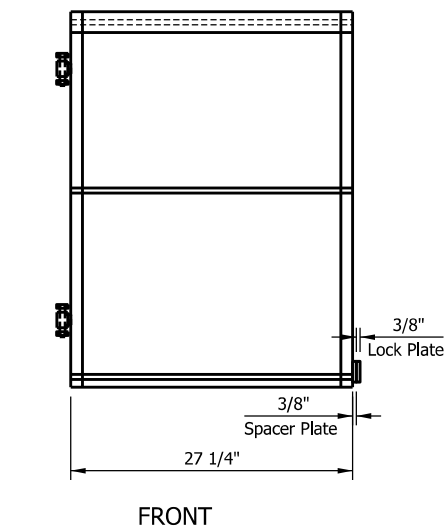
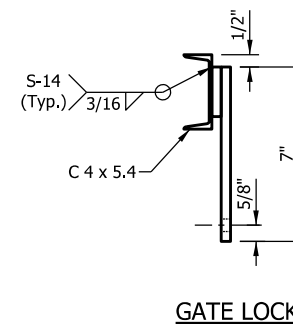
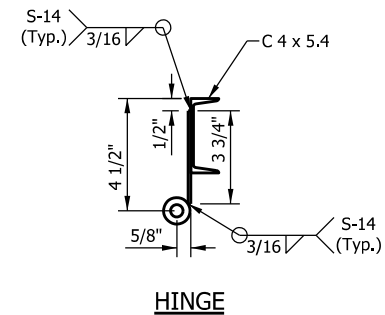


**SIDE VIEW OF
LADDER AND CAGE**

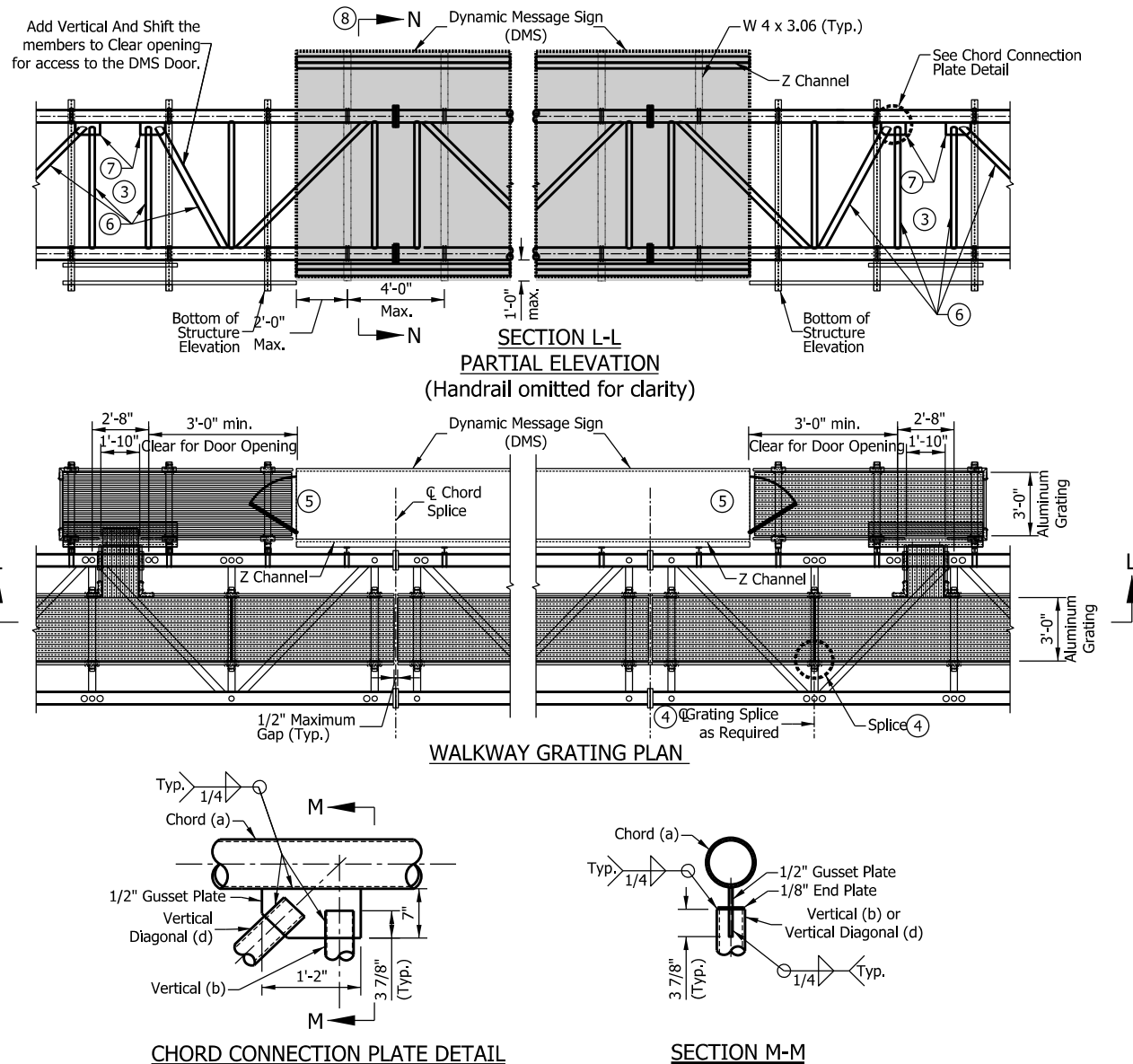


DETAIL F

INDIANA DEPARTMENT OF TRANSPORTATION
DYNAMIC MESSAGE SIGN STRUCTURE
LADDER DETAILS



INDIANA DEPARTMENT OF TRANSPORTATION DYNAMIC MESSAGE SIGN STRUCTURE SECURITY GATE DETAILS



NOTES:

1. Interior walkway gratings are extruded I-bars 2" x 1/4" at 1 3/16" center-to-center. Crossbar shall have a maximum gap of 4". Moment of inertia $I_x = 1.382 \text{ in}^4$. A different grating of equal strength may be used upon approval.
2. Interior walkway grating shall run the full length center to center of end support truss members plus 9" at each end.
3. The contractor shall coordinate with the fabricator to determine which truss panel is to be modified to allow opening for access to the DMS door.
4. Interior walkway gratings can be spliced on center of any horizontal truss members as needed. See Sheet 18 for typical grating splice detail.
5. The contractor shall coordinate with sign manufacturer so floor inside DMS is one comfortable step to the exterior grating.
6. Truss vertical and diagonal members on each side of the DMS access door shall be aluminum with 4.0" diameter and a minimum wall thickness of 0.500".
7. Install gusset plates at vertical and diagonal intersection on each side of the opening for access to DMS door.
8. See Sheet 17 for Section N-N.

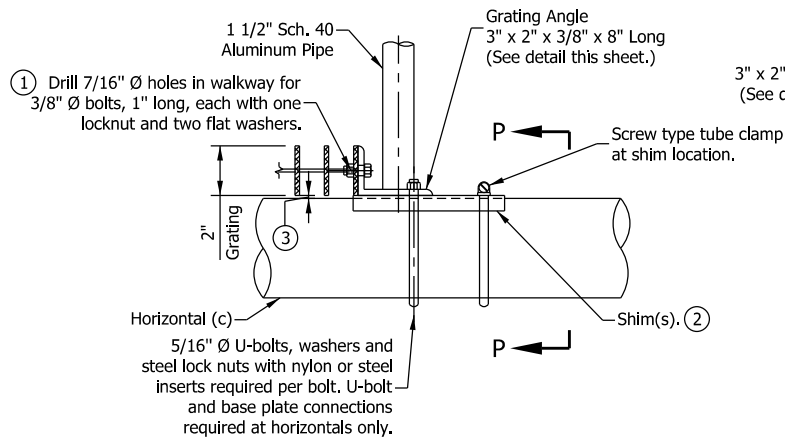
INDIANA DEPARTMENT OF TRANSPORTATION

DYNAMIC MESSAGE SIGN STRUCTURE
WALKWAY GRATING DETAILS

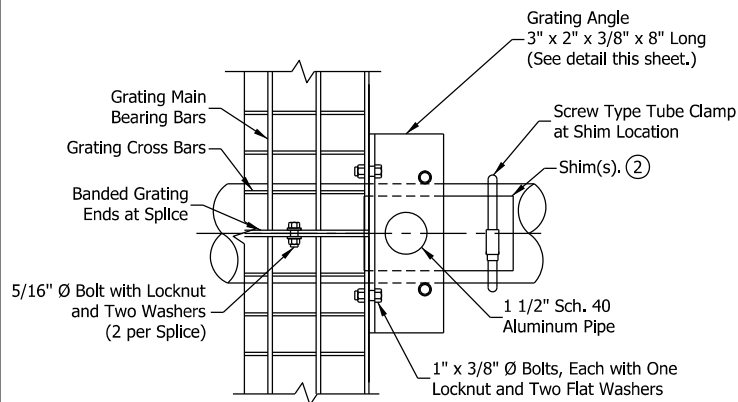


1. The front face of the DMS shall be tilted at 3° toward approaching traffic. If the DMS is not built with the front face tilted appropriately, a block shall be placed on the top of the back face to obtain the 3° tilt.
- ② The walkway grating width is nominal and may vary $\pm 1/2"$ based on available standard widths.
- ③ The bottom of the DMS door shall open without obstruction from the grating.
- ④ (1) A-325 bolt 1/2" x 2" on each side of the WF (A-N) 4 x 3,06 aluminum bracket web with (1) flat washer and (1) lock nut.
5. (2) flat washers, (2) lock washers, and (2) lock nuts per U-bolt; 4 required per bracket.

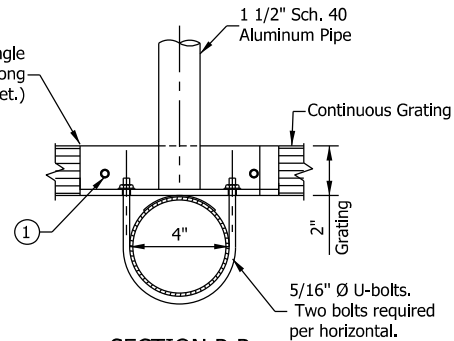
INDIANA DEPARTMENT OF TRANSPORTATION DYNAMIC MESSAGE SIGN STRUCTURE WALKWAY GRATING DETAILS



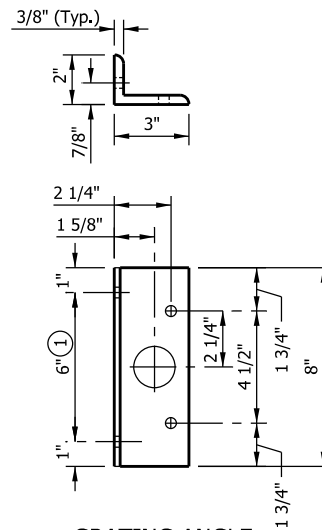
GRATING SUPPORT DETAIL



GRATING SPLICE DETAIL



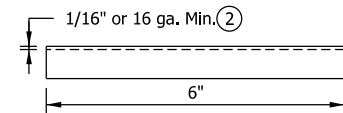
SECTION P-P



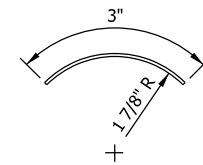
GRATING ANGLE

NOTES:

- ① Drilling of holes in grating may be done in shop or field, based on Contractor's preference and subject to accurate alignment.
- ② Shims may be placed as shown if needed to compensate for alignment variations between horizontal and diagonal pipes beyond adjustment provided by angles. Thicker shims may be used subject to shims performing properly.
- ③ Tube-to-grating gap may vary from 0" to 1/2" max. to align walkway and allow for camber.



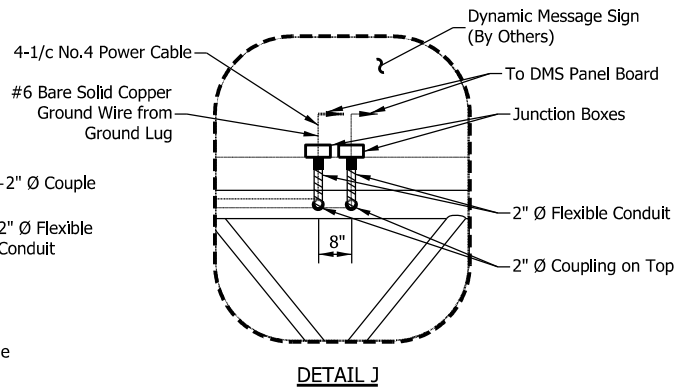
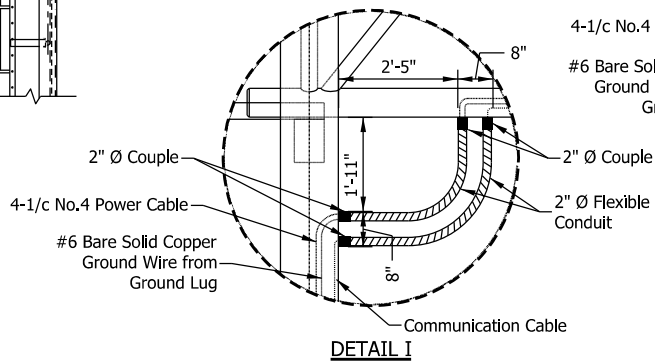
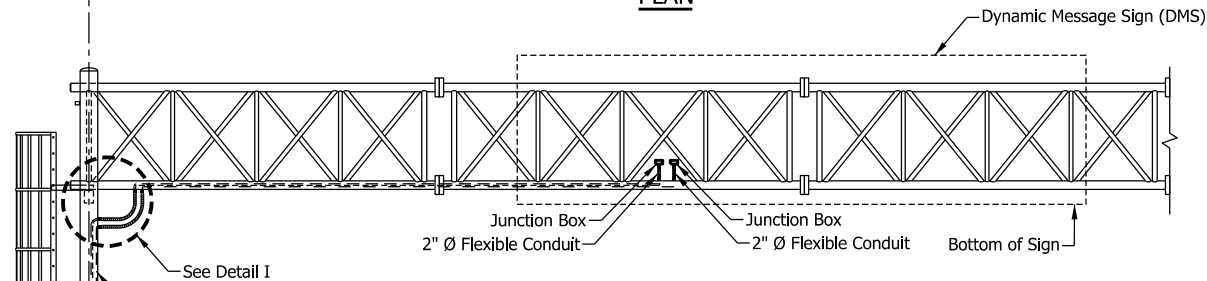
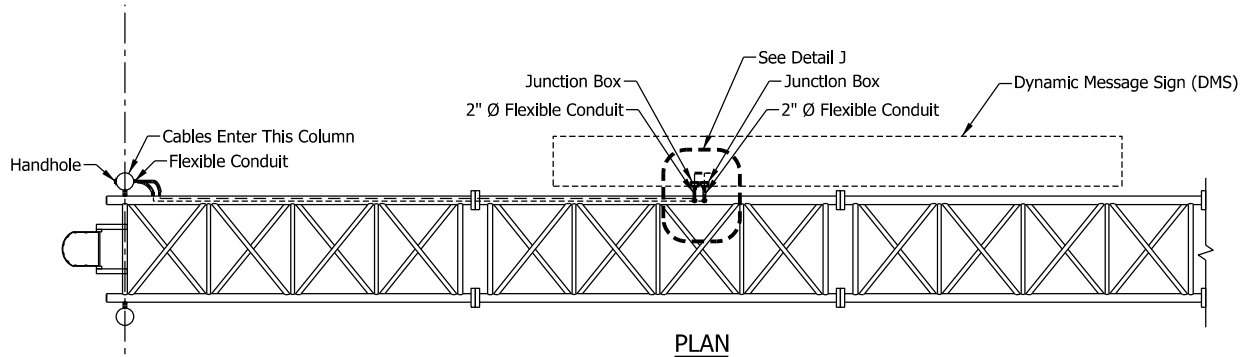
ELEVATION



END VIEW

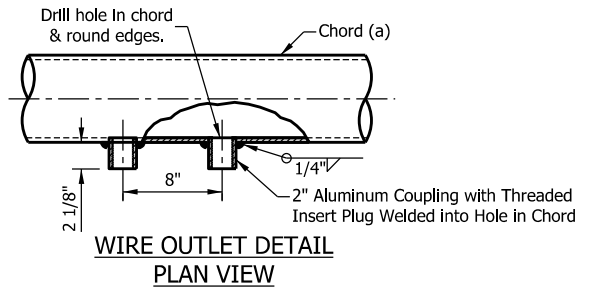
SHIM DETAIL

INDIANA DEPARTMENT OF TRANSPORTATION
DYNAMIC MESSAGE SIGN STRUCTURE
WALKWAY GRATING DETAILS

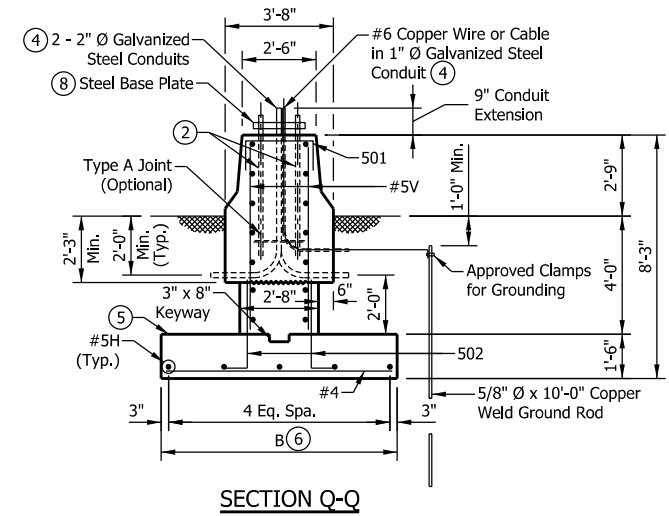
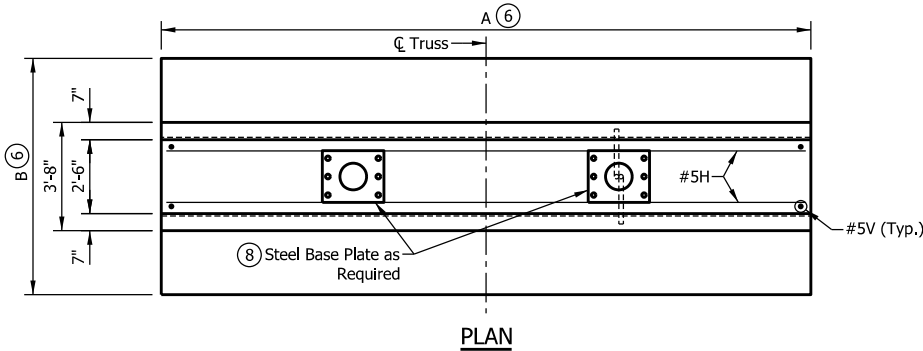
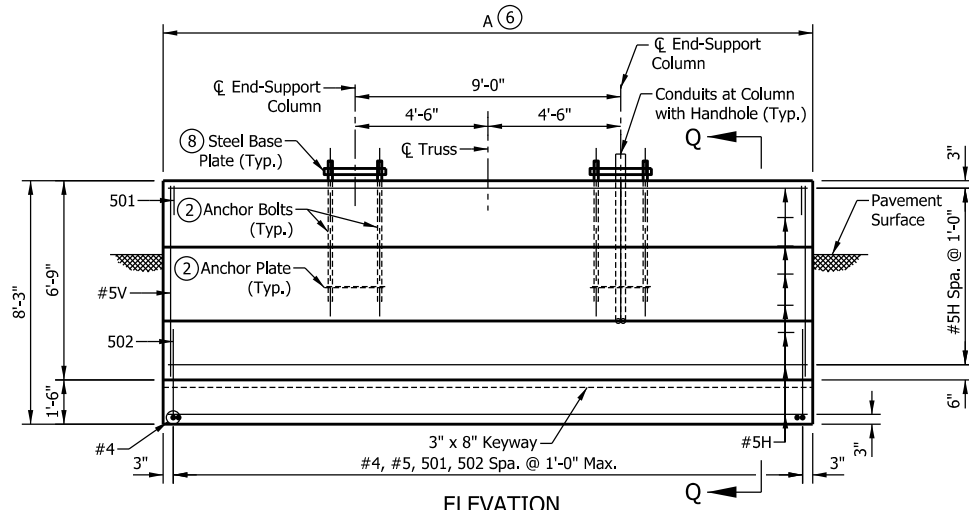


NOTES:

1. Cables shall be laid out as shown or as otherwise directed.
2. It is the Contractor's responsibility to coordinate locations of cable access with manufacturers.
3. Wire outlets shall be composed of aluminum on the chord and steel on the end support and shall have threaded-insert plug.



INDIANA DEPARTMENT OF TRANSPORTATION
DYNAMIC MESSAGE SIGN STRUCTURE
WIRING LAYOUT DETAILS

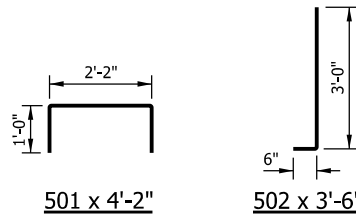


LEGEND:

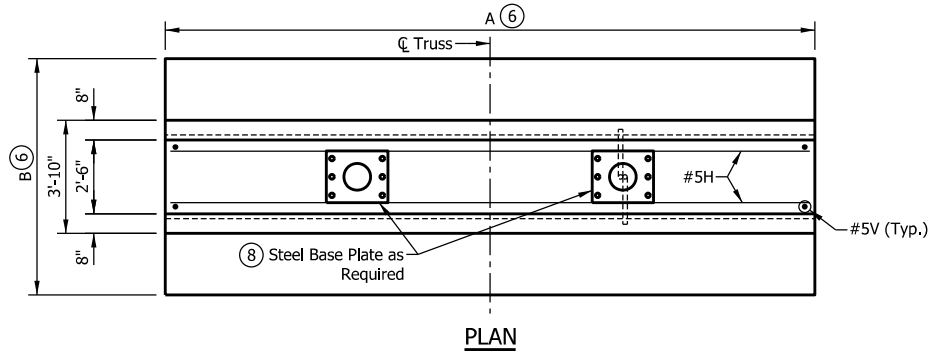
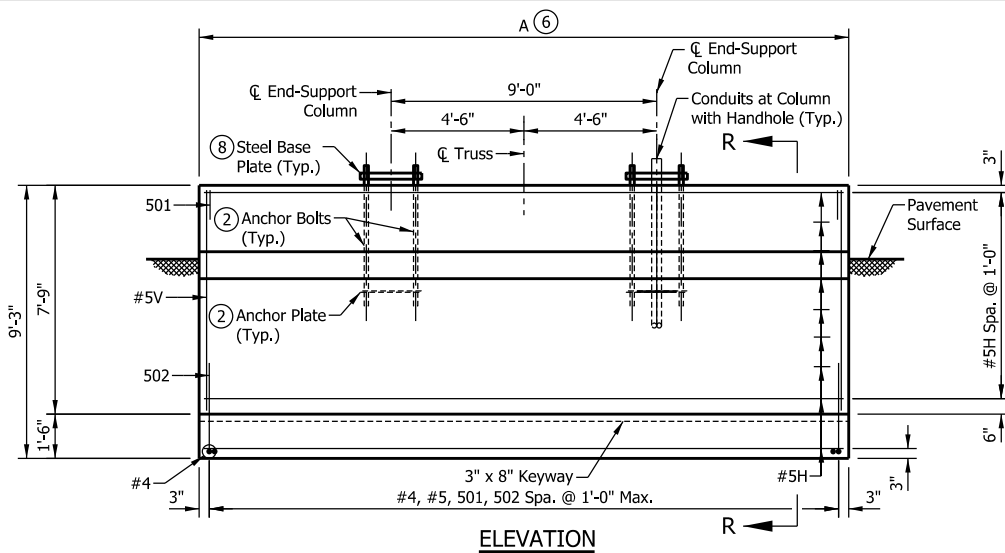
H = Horizontal
V = Vertical

NOTES:

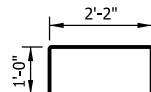
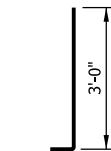
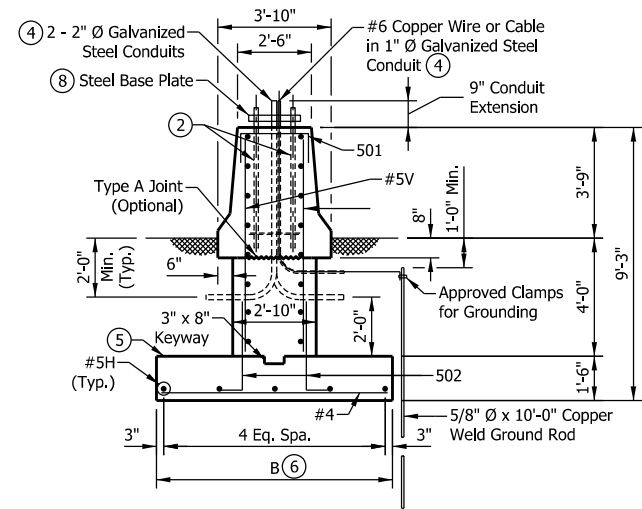
1. See Standard Drawing E 602-CCMB-03 for barrier wall width transition.
2. See Sheet 12 for anchor bolt and anchor plate details.
3. Surface seal top and sides of barrier railing to the pavement surface.
4. Thread and cap both ends of steel conduit.
5. Top of foundation shall be level.
6. For variable dimensions, reinforcing schedule, and estimated quantities, see Sheet 23.
7. Top of the footing shall be a minimum of 4'-0" below the pavement or ground surface.
8. See Sheet 10 for base plate details.



INDIANA DEPARTMENT OF TRANSPORTATION
DYNAMIC MESSAGE SIGN STRUCTURE
SPREAD FOUNDATION
AT 33" CONCRETE BARRIER WALL

**NOTES:**

1. See Standard Drawing E 602-CCMB-03 for barrier wall width transition.
2. See Sheet 12 for anchor bolt and anchor plate details.
3. Surface seal top and sides of barrier railing to the pavement surface.
4. Thread and cap both ends of steel conduit.
5. Top of foundation shall be level.
6. For variable dimensions, reinforcing schedule, and estimated quantities, see Sheet 23.
7. Top of the footing shall be a minimum of 4'-0" below the pavement or ground surface.
8. See Sheet 10 for base plate details.

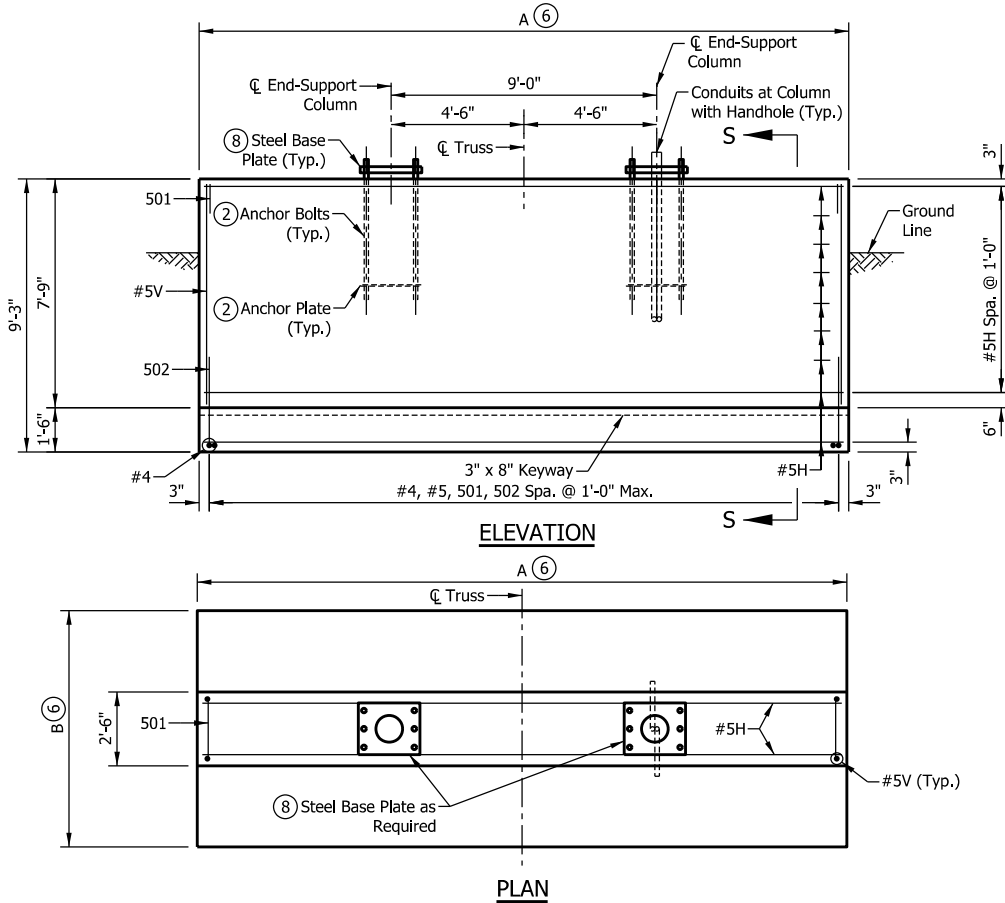
**501 x 4'-2"****502 x 3'-6"****LEGEND:**

H = Horizontal

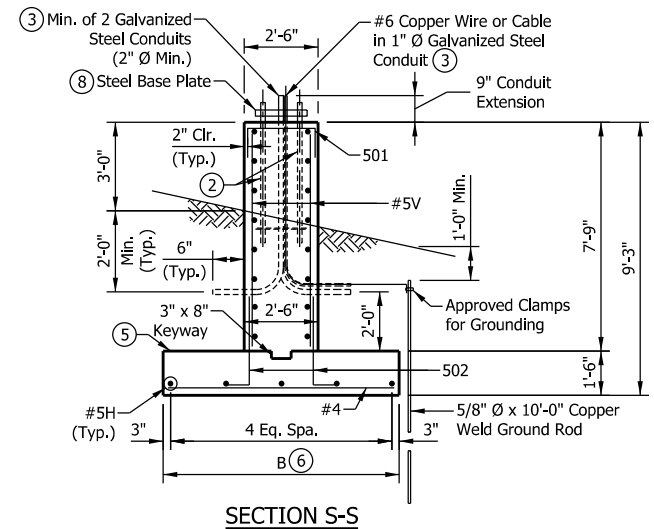
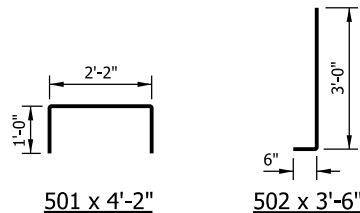
V = Vertical

INDIANA DEPARTMENT OF TRANSPORTATION

**DYNAMIC MESSAGE SIGN STRUCTURE
SPREAD FOUNDATION
AT 45" CONCRETE BARRIER WALL**

**NOTES:**

1. See Standard Drawing E 602-CCMB-03 for barrier wall width transition.
2. See Sheet 12 for anchor bolt and anchor plate details.
3. Surface seal top and sides of barrier railing to the pavement surface.
4. Thread and cap both ends of steel conduit.
5. Top of foundation shall be level.
6. For variable dimensions, reinforcing schedule, and estimated quantities, see Sheet 23.
7. Top of the footing shall be a minimum of 4'-0" below the pavement or ground surface.
8. See Sheet 10 for base plate details.

**LEGEND:**

H = Horizontal

V = Vertical

INDIANA DEPARTMENT OF TRANSPORTATION

**DYNAMIC MESSAGE SIGN STRUCTURE
SPREAD FOUNDATION
AT MEDIAN OR SHOULDER, 36" HEIGHT**

TABLE 1: SPREAD FOUNDATIONS FOR DYNAMIC MESSAGE OVERHEAD SIGN STRUCTURE

MAX. SIGN AREA (SFT)	ALLOWABLE GROSS SOIL BEARING PRESSURE (PSF)	FOOTING DIMENSION		TYPE OF BARRIER
		LENGTH, A (FT)	WIDTH, B (FT)	
300	1500 - 2499	26'	7'	33", 45" or 36" Median/Shoulder
	2500 - 3499	22'	5'	33", 45" or 36" Median/Shoulder
	> 3499	20'	5'	33", 45" or 36" Median/Shoulder

TABLE 2: SPREAD FOUNDATIONS DIMENSIONS AND BILL OF MATERIALS

FOOTING DIMENSION		TYPE OF BARRIER	#4		#5H		#5V		501		502		TOTAL EPOXY COATED REINFORCING BARS (LBS)	CONCRETE CLASS A (CYS)	SURFACE SEAL (SYS)
A (FT)	B (FT)		NO. BARS	LENGTH	NO. BARS	LENGTH	NO. BARS	LENGTH	NO. BARS	LENGTH	NO. BARS	LENGTH			
26'	7'	33" Concrete Barrier	27	6'-8"	19	25'-8"	54	6'-6"	27	4'-2"	54	3'-6"	1309	27.9	23.9
		45" Concrete Barrier	27	6'-8"	21	25'-8"	54	7'-6"	27	4'-2"	54	3'-6"	1418	30.9	29.7
		36" Median or Shoulder Barrier	27	6'-8"	21	25'-8"	54	7'-6"	27	4'-2"	54	3'-6"	1418	28.8	24.6
22'	5'	33" Concrete Barrier	23	4'-8"	19	21'-8"	46	6'-6"	23	4'-2"	46	3'-6"	1081	21.2	20.2
		45" Concrete Barrier	23	4'-8"	21	21'-8"	46	7'-6"	23	4'-2"	46	3'-6"	1175	23.7	25.1
		36" Median or Shoulder Barrier	23	4'-8"	21	21'-8"	46	7'-6"	23	4'-2"	46	3'-6"	1175	21.9	20.8
20'	5'	33" Concrete Barrier	21	4'-8"	19	19'-8"	42	6'-6"	21	4'-2"	42	3'-6"	984	19.3	18.4
		45" Concrete Barrier	21	4'-8"	21	19'-8"	42	7'-6"	21	4'-2"	42	3'-6"	1069	21.6	22.9
		36" Median or Shoulder Barrier	21	4'-8"	21	19'-8"	42	7'-6"	21	4'-2"	42	3'-6"	1069	19.9	18.9

NOTES:

- Geotechnical recommendations for Allowable Gross Soil Bearing Pressure shall be obtained to determine footing size and reinforcement shown in Tables 1 and 2.
- If Allowable Gross Soil Bearing Pressure is less than 1500 psf, a drilled shaft or other special foundation shall be used.
- See Sheets 20 through 22 for locations of dimensions and reinforcing bars.

INDIANA DEPARTMENT OF TRANSPORTATION

DYNAMIC MESSAGE SIGN STRUCTURE
SPREAD FOUNDATIONS QUANTITIES